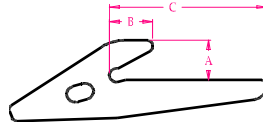
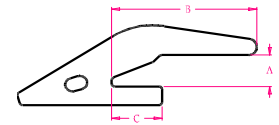


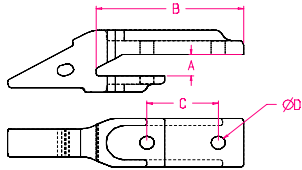
**Flush Mount**



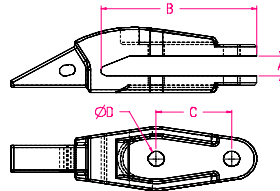
**Bottom Leg**



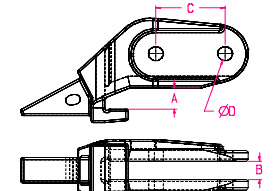
**Wrap Around**



**Bolt-on A**



**Bolt-on B**



**Bolt-on Corner**

**2A Shanks**

Part #	Style	Weight lbs	A	B	C	D	Pin	Lock
12L4DW-8-2A	Flush Mount	1.87	0.75	3.75	6.87	N/A	N/A	N/A
12L5DW-8-2A	Flush Mount	1.91	0.69	3.75	6.87	N/A	N/A	N/A
12L6DW-8-2A	Flush Mount	1.95	0.69	3.75	6.87	N/A	N/A	N/A
12L6DW-8-2A-H	Flush Mount	1.95	0.69	3.75	6.87	N/A	RP-H2A	N/A
1S1-8-2A	Bottom Leg	1.52	0.63	0.81	3.87	N/A	N/A	N/A
1S5-8-2A	Bottom Leg	2.16	0.35	N/A	4.00	N/A	N/A	N/A
1S5-8-2A-S	Bottom Leg	1.36	0.57	N/A	3.00	N/A	N/A	N/A
CD-1-2A	Bottom Leg	1.50	0.57	0.93	3.88	N/A	N/A	N/A
SA-15625	Wrap Around	3.68	1.59	5.63	2.12	N/A	N/A	N/A
TB-8000-2A	Wrap Around	2.71	1.50	7.22	2.72	N/A	N/A	N/A

**3C Shanks**

16S7-8-3C	Wrap Around	2.76	0.81	3.36	1.56	N/A	N/A	N/A
D58499	Wrap Around	2.23	0.95	6.00		N/A	N/A	N/A
3D1-8-3C		7.62	Please contact for information					N/A
23D1-8-3C		2.23	Please contact for information					N/A
D26368	Bottom Leg	2.64	0.88	0.82	4.07	N/A	N/A	N/A
HH8003-C	Bottom Leg	2.61	0.56	N/A	4.00	N/A	N/A	N/A

**23 Series Shanks**

CL-1001-23	Flush Mount	4.02	0.94	4.70	7.98	N/A	23 Series Pin	N/A	
CL-1001-23-1	Flush Mount	3.80	0.75	3.51	6.79	N/A	23 Series Pin	N/A	
CL-1002-23	Flush Mount	4.01	1.19	4.70	7.98	N/A	23 Series Pin	N/A	
12S1A-8-23	Bottom Leg	2.70	1.09	1.11	7.01	N/A	23 Series Pin	N/A	
V2-23	Bottom Leg	6.08	1.06	2.69	5.24	N/A	23 Series Pin	N/A	
V1-23LH		5.40	Please contact for information					23 Series Pin	N/A
V1-23RH		5.40	Please contact for information					23 Series Pin	N/A
16S7-8-23	Wrap Around	3.47	1.06	4.50	1.56	N/A	23 Series Pin	N/A	
1S7-8-23	Wrap Around	3.51	0.95	4.50	2.12	N/A	23 Series Pin	N/A	
CB10001-23	Wrap Around	5.00	1.09	5.62	2.75	N/A	23 Series Pin	N/A	
D1002-23	Wrap Around	3.48	1.05	4.50	1.56	N/A	23 Series Pin	N/A	
D1003-23	Wrap Around	3.74	0.69	4.50	1.56	N/A	23 Series Pin	N/A	
D1004-23	Wrap Around	3.48	1.05	4.50	1.56	N/A	23 Series Pin	N/A	
D415651	Wrap Around	9.00	2.06	8.71	2.56	N/A	23 Series Pin	N/A	
D48212	Wrap Around	4.25	1.06	5.70	2.85	N/A	23 Series Pin	N/A	
TB-1001-23	Wrap Around	4.40	1.41	5.51	1.68	N/A	23 Series Pin	N/A	
TB-2002-23	Wrap Around	7.71	2.31	8.28	2.81	N/A	23 Series Pin	N/A	
TB-3003-23	Wrap Around	10.14	1.32	12.26	2.74	N/A	23 Series Pin	N/A	
LAF9201	Wrap Around	6.58	1.81	5.99	3.19	N/A	23 Series Pin	N/A	
LAF9201-8275	Wrap Around		Please contact for information					23 Series Pin	N/A
D49586	Bolt-on A	6.61	0.77	6.22	3.00	0.66	23 Series Pin	N/A	



P.O. Box 673  
Findlay, Ohio 45839  
800 628 2715  
Fax 419 427 0874

F3445-D-23	Bolt-on B	8.64	0.81	6.12	3.00	0.69	23 Series Pin	N/A
H-017023	Bolt-on Flush Mount	5.25	Please contact for information				23 Series Pin	N/A



P.O. Box 673  
 Findlay, Ohio 45839  
 800 628 2715  
 Fax 419 427 0874

## 24 Series Shanks

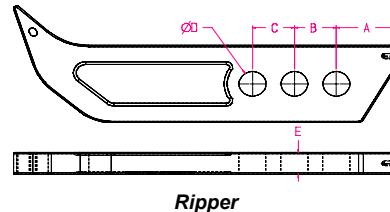
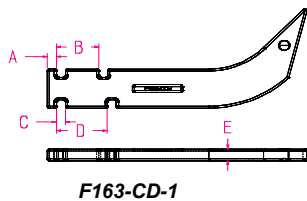
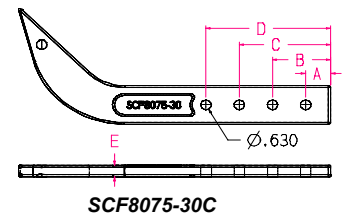
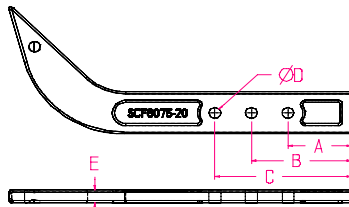
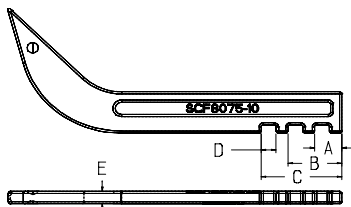
Part #	Style	Weight lbs	A	B	C	D	E	Pin
16L3BW-8-24	Wrap Around	4.75	1.06	5.50	2.00	N/A	24 Series Pin	N/A
17S1-8-24	Bottom Leg	6.46	1.49	1.13	5.63	N/A	24 Series Pin	N/A
2432-AW-24		2.75	Please contact for information				24 Series Pin	N/A
F240-110-13	Bolt-on A	8.13	1.06	7.50	3.75	0.69	24 Series Pin	N/A
240-110-08	Bolt-on A	8.70	1.13	7.25	3.50	0.69	24 Series Pin	N/A
F-3679-A-24	Bolt-on B	12.40	1.06	7.75	3.75	0.81	24 Series Pin	N/A
F3679-24	Bolt-on Corner	17.10	1.23	1.06	3.75	0.81	24 Series Pin	N/A
F-560-24	Ripper		Please See Scarfier Series and Ripper Shanks				24 Series Pin	N/A
F-506-24	Ripper	44.80	Please See Scarfier Series and Ripper Shanks				24 Series Pin	N/A
F2021-F24	Bolt-on		Please contact for information				24 Series Pin	N/A

## 25 Series Shanks

Part #	Style	Weight lbs	A	B	C	D	E	Pin
20L15BW-8-25	Wrap Around	7.40	1.56	5.63	2.00	N/A	25 Series Pin	N/A
20L3BW-8-25	Wrap Around	7.80	1.31	5.62	2.00	N/A	25 Series Pin	N/A
20LBW-8-25-EX	Wrap Around	9.20	1.36	6.50	3.00	N/A	25 Series Pin	N/A
F-251-112-15	Bolt on A	10.97	1.31	8.25	4.25	0.81	25 Series Pin	N/A
F-251-112-20	Bolt on A	11.20	1.31	7.50	3.50	0.69	25 Series Pin	N/A
D49940	Bolt on A	11.52	1.03	8.50	3.75	0.69	25 Series Pin	N/A
F3637-A-25	Bolt on B	12.90	1.06	7.75	3.75	0.81	25 Series Pin	N/A
F4272-A-25	Bolt on B	14.80	1.31	7.25	3.50	0.81	25 Series Pin	N/A
F3679-A-25	Bolt on B	12.70	1.06	7.75	3.75	1.06	25 Series Pin	N/A
F3608-D-25-LH	Bolt on Corner	14.50	Please contact for information				25 Series Pin	N/A
F3679-25	Bolt on Corner	17.20	1.23	1.06	3.75	1.06	25 Series Pin	N/A
F3637-25	Bolt on Corner	17.97	1.23	1.06	3.75	0.81	25 Series Pin	N/A
F3623-25	Bolt on Corner	14.00	1.50	1.28	3.50	0.81	25 Series Pin	N/A
F-507-C-25	Ripper	93.10	Please See Scarfier Series and Ripper Shanks				25 Series Pin	N/A

## 27 Series Shanks

Part #	Style	Weight lbs	A	B	C	D	E	Pin
WB27-1	Wrap Around	20.30	1.59	10.00	3.00	N/A	27 Series Pin	N/A
F3638-A-27	Bolt on B	22.00	1.35	9.00	4.50	1.16	27 Series Pin	N/A
F3638-27	Bolt on Corner	21.40	1.50	1.38	4.50	1.19	27 Series Pin	N/A



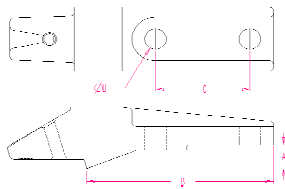
## Scarfier Series and Ripper Shanks

Part #	Style	Weight lbs	A	B	C	D	E	Pin
SCF8075-10C	Scarfier Ripper	9.21	1.53	3.03	4.53	0.84	0.75	N/A
SCF8075-20C	Scarfier Ripper	8.91	3.50	5.50	7.50	0.63	0.75	N/A
SCF8075-30C	Scarfier Ripper	9.06	1.50	3.50	5.50	7.50	0.75	N/A
F-560-24	Ripper	36.95	1.97	N/A	N/A	1.059	1.5	24 Series Pin
F-506-24	Ripper	44.8	5.31	2.36	2.36	1.75	1.5	24 Series Pin

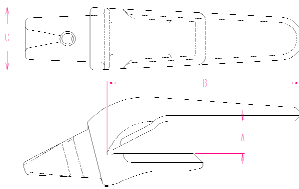


P.O. Box 673  
Findlay, Ohio 45839  
800 628 2715  
Fax 419 427 0874

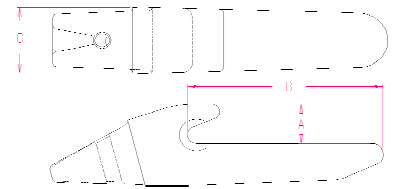
F-507-C-25	Ripper	93.1	5.00	3.50	3.50	2.25	2.00	25 Series Pin
------------	--------	------	------	------	------	------	------	---------------



**Flush Mount Bolt on**



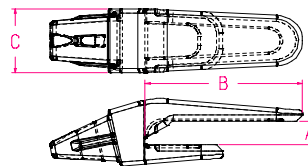
**Wrap Around**



**Bottom Leg**

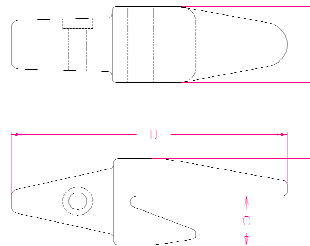
**Hensley Style**

Part #	Style	Weight lbs	A	B	C	D	E	Pin
H-834156	Bottom Leg	4.50	1.08	4.99	1.80	N/A	N/A	156 Series Pin
H-548156	Wrap Around	4.00	0.69	4.47	2.19	N/A	N/A	156 Series Pin
H-550156	Wrap Around	4.70	1.06	6.25	2.19	N/A	N/A	156 Series Pin
H-550156-L	Corner Shank	Please contact for information				N/A	N/A	156 Series Pin
H-550156-R	Corner Shank	Please contact for information				N/A	N/A	156 Series Pin
H-552156	Wrap Around	5.40	0.81	5.59	2.41	N/A	N/A	156 Series Pin
H-552156-L	Corner Shank	Please contact for information				N/A	N/A	156 Series Pin
H-552156-R	Corner Shank	Please contact for information				N/A	N/A	156 Series Pin
H230156	Wrap Around	4.00	0.69	4.00	2.08	N/A	N/A	156 Series Pin
H-017156	Flush Mount Bolt on	5.29	0.63	5.94	3.00	0.69	N/A	156 Series Pin
H-117156	Flush Mount Bolt on	5.25	0.83	5.94	3.00	0.69	N/A	156 Series Pin
H-836156	Bolt on	3.56	Please contact for information				N/A	156 Series Pin



**Hensley Style 290, 330, 370**

Part #	Style	Weight lbs	A	B	C	D	E	Pin
H-127290		21.40	1.36	7.45	3.75	N/A	N/A	290 Series Pin
H-158290		22.20	1.55	8.07	3.64	N/A	N/A	290 Series Pin
H-158330		35.40	1.62	8.06	4.25	N/A	N/A	290 Series Pin
H-937330		33.50	1.81	8.30	4.24	N/A	N/A	290 Series Pin
H-937370		40.30	1.83	9.91	4.57	N/A	N/A	290 Series Pin



**New Holland Style**

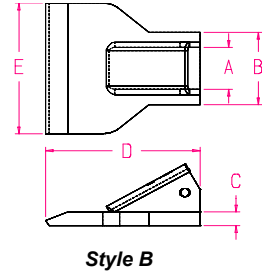
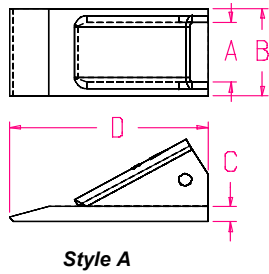
Part #	Style	Weight lbs	A	B	C	D	E	Pin
10023NH-C		3.90	2.12	2.42	1.37	7.09	N/A	NH Series Pin

**Cat Style Shanks**

Please contact for part information



P.O. Box 673  
Findlay, Ohio 45839  
800 628 2715  
Fax 419 427 0874



### 2A Fabricated Teeth

Part #	Style	Weight lbs	A	B	C	D	E	Pin
8002A	Style A	1.01	1.10	1.75	0.38	4.12	N/A	2A Series Pin
8802A	Style A	1.18	1.10	1.75	0.44	4.31	N/A	2A Series Pin

### 3C Fabricated Teeth

8003C	Style A	1.60	1.50	2.25	0.38	4.75	N/A	Crimp-on
8003C Blunt		1.60	1.50	2.25	0.38	4.75	N/A	Crimp-on
8003CLH	Style A	1.70	1.50	2.75	0.50	4.75	N/A	Crimp-on
8003CLHB		1.70	1.50	2.75	0.50	4.75	N/A	Crimp-on
8003CRH	Style A	1.70	1.50	2.75	0.50	4.75	N/A	Crimp-on
8003CRHB		1.70	1.50	2.75	0.50	4.75	N/A	Crimp-on
8103C	Style A	1.95	1.50	2.25	0.50	4.88	N/A	Crimp-on
8103C Blunt		1.95	1.50	2.25	0.50	4.88	N/A	Crimp-on
8503C	Style B	3.17	1.50	2.64	0.50	5.25	4.77	Crimp-on

### 23 Series Fabricated Teeth

8023	Style A	2.04	1.50	2.25	0.50	5.12	N/A	23 Series Pin
8523	Style B	4.20	1.50	2.64	0.50	5.25	4.77	23 Series Pin
8823	Style A	2.30	1.50	2.25	0.56	5.50	N/A	23 Series Pin
8923H	Style A	2.90	1.50	2.38	0.62	5.50	N/A	23 Series Pin

### 24 Series Fabricated Teeth

8024	Style A	3.28	1.50	2.25	0.56	6.50	N/A	24 Series Pin
8524	Style B	4.25	1.50	2.50	0.50	6.50	4.50	24 Series Pin
8824	Style A	3.60	1.50	2.38	0.62	6.40	N/A	24 Series Pin

### 25 Series Fabricated Teeth

8825	Style A	4.50	2.00	2.88	0.62	6.88	N/A	25 Series Pin
8825H	Style A	5.20	2.00	2.88	0.75	6.88	N/A	25 Series Pin

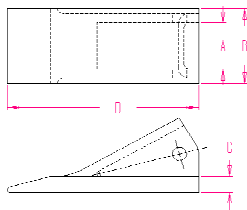
### 27 Series Fabricated Teeth

8027	Style A	7.90	2.88	3.88	0.88	7.00	N/A	27 Series Pin
------	---------	------	------	------	------	------	-----	---------------

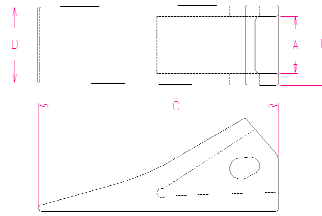
### Scarfier Series Fabricated Teeth

8001L	Style A	1.81	1.00	1.56	0.56	6.00	N/A	Crimp-on	
OSP	Style A		0.75	1.12	0.31	2.56	N/A	Crimp-on	
8075	Style A	1.14	0.80	1.38	0.44	5.00	N/A	Crimp-on	
8075-1	Style A	1.14	0.80	1.38	0.44	5.00	N/A	Crimp-on	
FAB-2D-5572		2.65	Please contact for information						

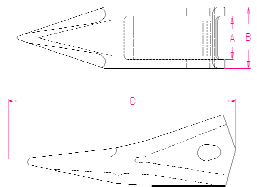




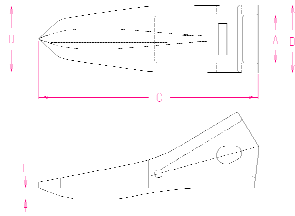
Style A



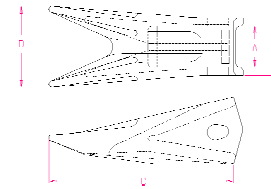
Style B



Style C



Style D



Style E

**2A Cast Teeth**

Part #	Style	Weight lbs	A	B	C	D	E	Pin
8002A-C	Style A	1.01	1.10	1.75	0.38	4.12	N/A	2A Series Pin

**3C Cast Teeth**

8003C	Style A	1.60	1.50	2.25	0.50	4.75	N/A	Crimp-on
8503CA	Style B	3.17	1.50	2.64	0.50	4.77	N/A	Crimp-on

**23 Series Cast Teeth**

8023C	Style A	2.04	1.50	2.25	0.50	5.12	N/A	23 Series Pin
8230	Style B	2.50	1.50	2.12	5.85	2.00	N/A	23 Series Pin
8230S	Style B	1.46	1.50	2.12	4.95	2.00	N/A	23 Series Pin
8330	Style B	2.80	1.50	2.12	5.85	2.12	N/A	23 Series Pin
8330F	Style B	3.00	1.50	2.12	5.85	2.12	N/A	23 Series Pin
8523CL	Style B	3.50	1.50	2.18	5.41	4.75	N/A	23 Series Pin
8623-1	Style C	3.20	1.50	2.12	6.67	N/A	N/A	23 Series Pin
8623-1F	Style C	3.20	1.50	2.12	6.67	N/A	N/A	23 Series Pin
8623TP-1	Style E	3.52	1.50	2.12	6.28	3.00	N/A	23 Series Pin
8723	Style D	2.45	1.50	2.12	6.35	2.06	0.35	23 Series Pin
8723F	Style D	2.69	1.50	2.12	6.35	2.06	0.35	23 Series Pin

**24 Series Cast Teeth**

8024C	Style A	3.28	1.50	2.25	0.56	6.50	N/A	24 Series Pin
8124	Style B	4.27	1.50	2.50	6.50	2.50	N/A	24 Series Pin
8340	Style B	4.00	1.50	2.38	7.03	2.25	N/A	24 Series Pin
8624	Style C	4.04	1.50	2.14	7.50	N/A	N/A	24 Series Pin
8624-TP	Style E	5.07	1.50	2.14	7.50	3.12	N/A	24 Series Pin

**25 Series Cast Teeth**

8025C	Style A	4.50	2.00	2.88	0.75	6.88	N/A	25 Series Pin
8250	Style B	6.80	2.00	2.88	7.62	2.62	N/A	25 Series Pin
8525	Style B	7.00	2.00	2.77	7.00	5.38	N/A	25 Series Pin
8625	Style C	6.13	2.00	2.77	7.97	N/A	N/A	25 Series Pin
8625-TP	Style E	6.46	2.00	2.78	7.63	3.63	N/A	25 Series Pin
8725	Style D	6.90	2.03	2.88	8.28	2.71	0.57	25 Series Pin



P.O. Box 673  
Findlay, Ohio 45839  
800 628 2715  
Fax 419 427 0874

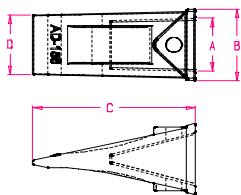
### 27 Series Cast Teeth

8127	Style B	7.96	2.89	3.84	7.40	3.84	N/A	27 Series Pin
8527	Style B	9.67	2.89	3.81	7.25	7.50	N/A	27 Series Pin

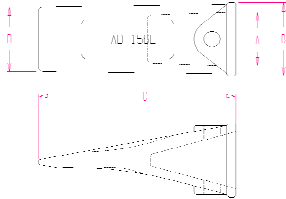
### Scarfier Series Cast Teeth

See previous page for print specs

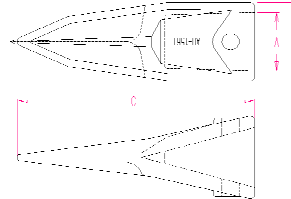
Part #	Style	Weight lbs	A	B	C	D	E	Pin	
8075	Style A	1.14	0.80	1.38	0.44	5.00	N/A	Crimp-on	
FAB-2D-5572		2.65	Please contact for information						



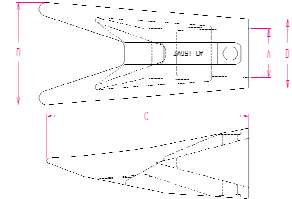
AD-156



AD-156L



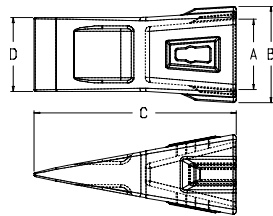
AD-156T



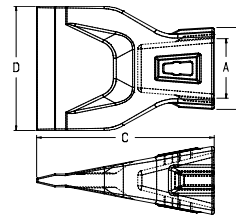
AD-156WT

### Hensley Style

Part #	Style	Weight lbs	A	B	C	D	E	Pin
AD-156	AD-156	1.50	1.58	2.13	4.50	1.79	N/A	156 Series Pin
AD-156L	AD-156L	1.70	1.58	2.13	5.29	1.87	N/A	156 Series Pin
AD-156T	AD-156T	1.90	1.58	2.13	5.91	N/A	N/A	156 Series Pin
AD-156WT	AD-156WT	3.50	1.58	2.24	6.06	3.30	N/A	156 Series Pin



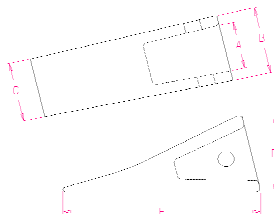
Standard



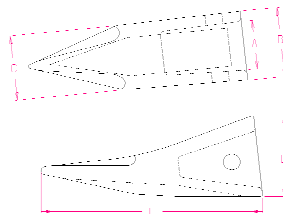
Wide

### Hensley Style 290, 330, 370

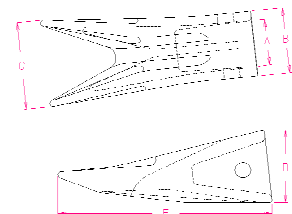
Part #	Style	Weight lbs	A	B	C	D	E	Pin
AD-290	Standard	7.54	2.85	3.96	8.03	3.22	N/A	290 Series Pin
AD-290F	Wide	13.00	2.85	3.96	8.03	6.22	N/A	290 Series Pin
AD-330	Standard	11.98	3.48	4.77	9.25	3.66	N/A	290 Series Pin
AD-330F	Wide	17.30	3.48	4.77	9.66	7.25	N/A	290 Series Pin
AD-370	Standard	16.80	3.75	5.13	10.18	4.09	N/A	290 Series Pin
AD-370F	Wide	22.00	3.75	5.13	10.18	8.00	N/A	290 Series Pin



2300NH-C



2310NH-C



2320NH-C

### New Holland Style

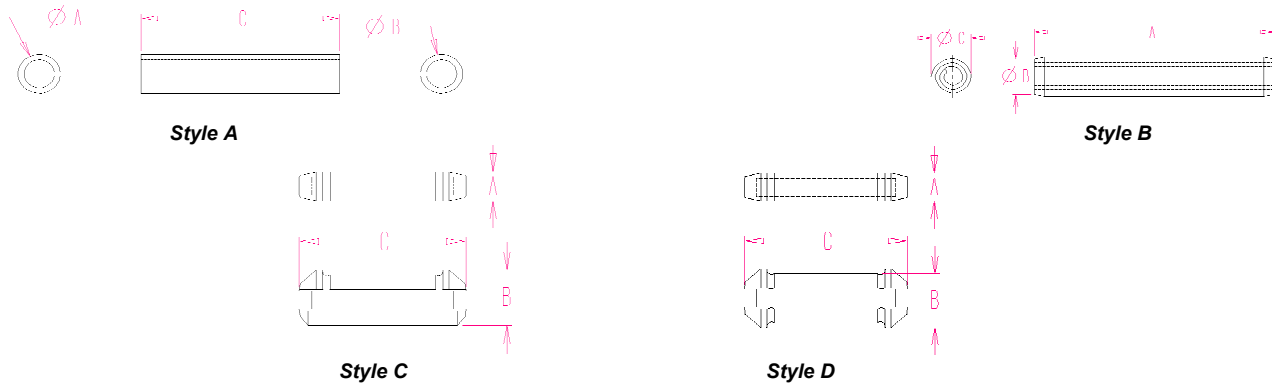
Part #	Style	Weight lbs	A	B	C	D	E	Pin
2300NH-C		3.00	1.59	2.25	2.00	2.63	6.16	NH Series Pin
2310NH-C		3.20	1.59	2.25	2.12	2.63	6.67	NH Series Pin
2320NH-C		3.80	1.59	2.25	3.00	2.49	6.79	NH Series Pin



P.O. Box 673  
Findlay, Ohio 45839  
800 628 2715  
Fax 419 427 0874

## Cat Style Teeth

Please contact for part information



## 2A Roll Pins

Part #	Style	Weight lbs	A	B	C
RP-H2A	Style A		0.32	1.50	0.32
06-61958	Style A		0.31	1.75	0.32

## 23 Series Flex Pins

RP-H23	Style C		0.39	0.69	2.12	
RP-H23R*	Style C		0.39	0.69	2.12	R* = Red Rubber
RP-H23XL	Style C		0.39	0.69	2.50	
RP-H23L	Style C		0.39	0.69	2.26	
RP-H23DBL	Style D		0.39	0.73	2.26	

## 24 Series Flex Pins

RP-H24	Style C		0.50	0.83	2.26	
--------	---------	--	------	------	------	--

## 25 Series Flex Pins

RP-H25	Style C		0.50	0.83	2.75	
TF25P-A	Style C		0.50	0.83	3.03	

## 27 Series Flex Pins

RP-H27	Style C		0.50	0.83	3.74	
--------	---------	--	------	------	------	--

## Hensley Style

P-100F	Style B		2.25	0.37	0.40	
P-156F	Style B		2.00	0.37	0.40	

## New Holland Style Pins and Retainers

8E6209	Retainer		OD - .75, ID - .41, Thickness - .28			
8E6208	Pin		2.32" Long x .43" OD			

## Cat Style Pins and Retainers

Please contact for part information



P.O. Box 673  
Findlay, Ohio 45839  
800 628 2715  
Fax 419 427 0874



P.O. Box 673  
Findlay, Ohio 45839  
800 628 2715  
Fax 419 427 0874