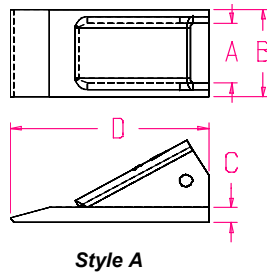


**Scarfier Series and Ripper Shanks**

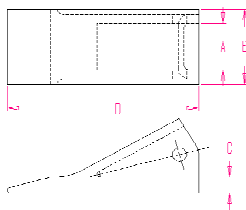
| Part #      | Style           | Weight lbs | A    | B    | C    | D     | E    | Pin           |
|-------------|-----------------|------------|------|------|------|-------|------|---------------|
| SCF8075-10C | Scarfier Ripper | 9.21       | 1.53 | 3.03 | 4.53 | 0.84  | 0.75 | N/A           |
| SCF8075-20C | Scarfier Ripper | 8.91       | 3.50 | 5.50 | 7.50 | 0.63  | 0.75 | N/A           |
| SCF8075-30C | Scarfier Ripper | 9.06       | 1.50 | 3.50 | 5.50 | 7.50  | 0.75 | N/A           |
| F-560-24    | Ripper          | 36.95      | 1.97 | N/A  | N/A  | 1.059 | 1.5  | 24 Series Pin |
| F-506-24    | Ripper          | 44.8       | 5.31 | 2.36 | 2.36 | 1.75  | 1.5  | 24 Series Pin |
| F-507-C-25  | Ripper          | 93.1       | 5.00 | 3.50 | 3.50 | 2.25  | 2.00 | 25 Series Pin |



Style A

**Scarfier Series Fabricated Teeth**

| Part #      | Style   | Weight lbs | A                              | B    | C    | D    | E   | Pin      |  |
|-------------|---------|------------|--------------------------------|------|------|------|-----|----------|--|
| 8001L       | Style A | 1.81       | 1.00                           | 1.56 | 0.56 | 6.00 | N/A | Crimp-on |  |
| OSP         | Style A |            | 0.75                           | 1.12 | 0.31 | 2.56 | N/A | Crimp-on |  |
| 8075        | Style A | 1.14       | 0.80                           | 1.38 | 0.44 | 5.00 | N/A | Crimp-on |  |
| 8075-1      | Style A | 1.14       | 0.80                           | 1.38 | 0.44 | 5.00 | N/A | Crimp-on |  |
| FAB-2D-5572 |         | 2.65       | Please contact for information |      |      |      |     |          |  |



Style A

**Scarfier Series Cast Teeth**

See previous page for print specs

| Part #      | Style   | Weight lbs | A                              | B    | C    | D    | E   | Pin      |  |
|-------------|---------|------------|--------------------------------|------|------|------|-----|----------|--|
| 8075        | Style A | 1.14       | 0.80                           | 1.38 | 0.44 | 5.00 | N/A | Crimp-on |  |
| FAB-2D-5572 |         | 2.65       | Please contact for information |      |      |      |     |          |  |



P.O. Box 673  
Findlay, Ohio 45839  
800 628 2715  
Fax 419 427 0874